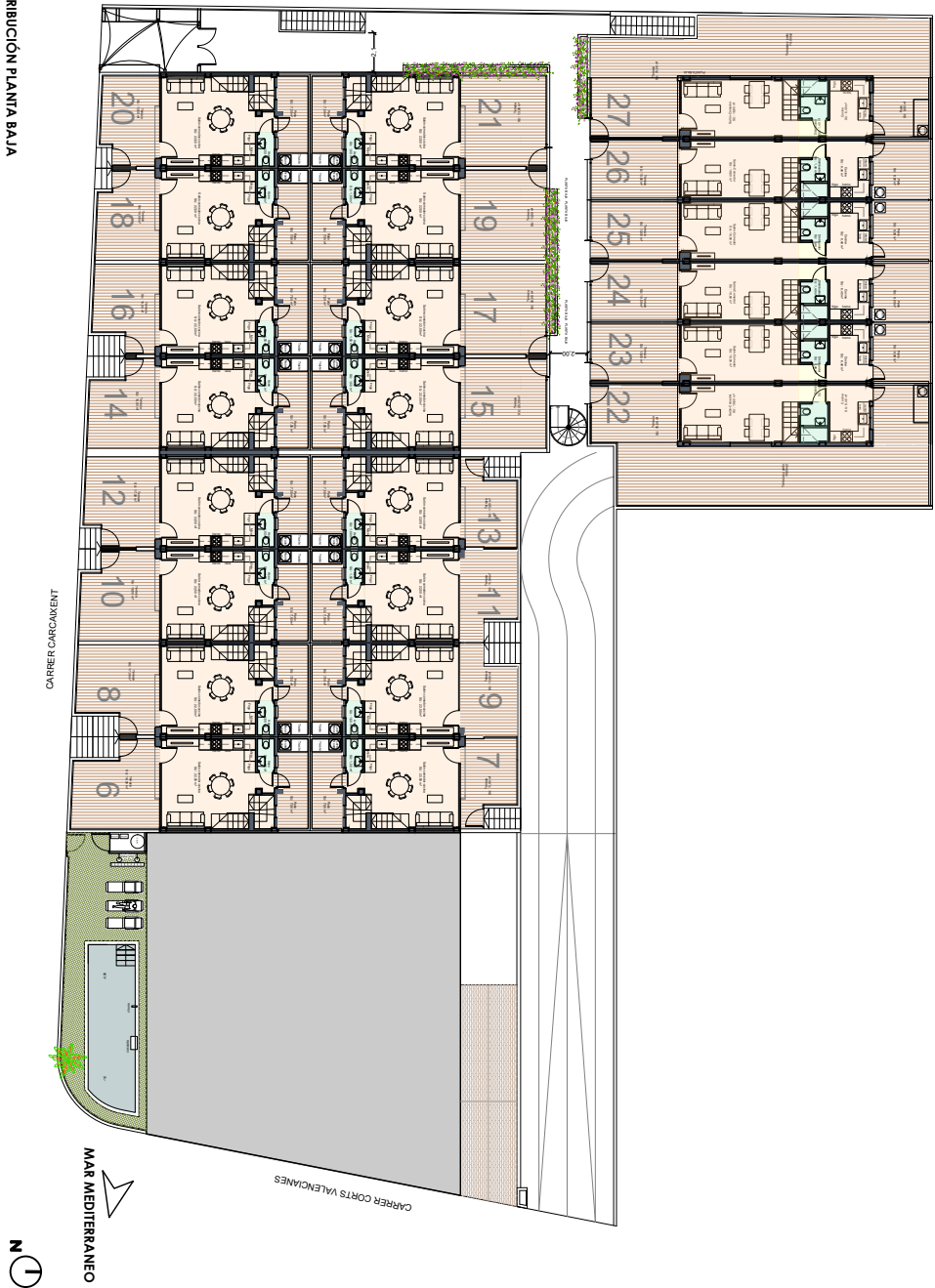


# Residencial El Oliverón



MedVipla [spanje.com](https://spanje.com)

DISTRIBUCIÓN PLANTA BAJA







# EL OLIVERÓN

The Oliverón is a development of 22 homes over three floors plus basement in Guardamar del Segura.

This residential development is located just 600 meters from the beaches of La Roqueta and Moncayo, two of the best known beaches in the area. Enjoy a stroll along the promenade filled with the best restaurants and bars in the area, as well as Ice Cream shops, fairs ... everything you need to spend the best holidays on the Costa Blanca.

All homes have 3 bedrooms and 3 bathrooms, open plan kitchen, living and dining room and also 3 separate terraces plus the solarium. The residential development has a communal swimming pool and garden area for the enjoyment of owners, as well as a garage for cars.



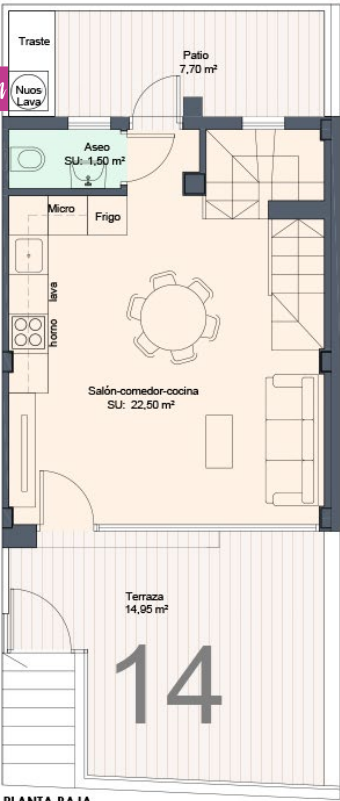
spanje.com

SUPERFICIE CONSTRUIDA	
Planta baja	32,30
Terraza planta baja	14,95
Patio	7,70
Planta primera	32,30
Planta segunda	17,60
Solarium	10,90
Sótano	49,30
TOTAL	165,05

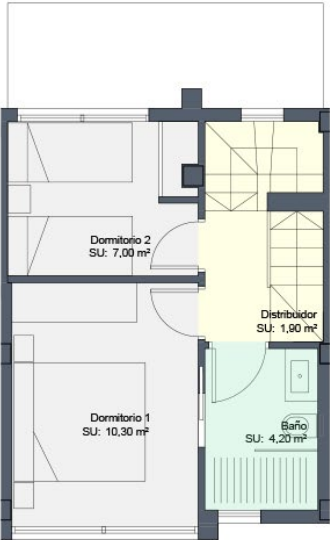
(\*) La superficie del sótano varía según la ubicación de la vivienda.  
(\*\*) Las terrazas de las viviendas varían dependiendo de la ubicación de la vivienda.



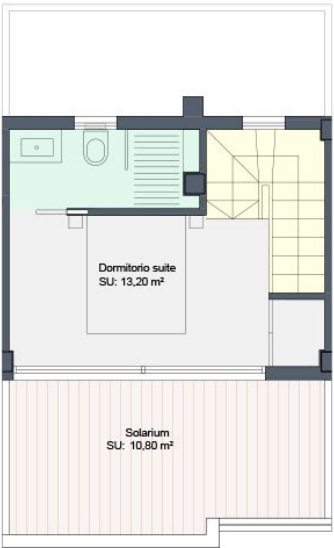
DISTRIBUCIÓN VIVIENDA 14



PLANTA BAJA



PLANTA PRIMERA



PLANTA SEGUNDA

160m<sup>2</sup>



3



3



comunitaria

